

# *The Pastoral Staff Letter*

## A Note From Jenny

Dear Friends,

I am writing to you from just outside Washington, D.C., where I am speaking about the importance of listening to women's voices in the church. The invitation came from Mount Vernon Presbyterian Church. That congregation's pastor, The Rev. Bob Melone, was my pastor during my time in seminary. It has been a joy to reconnect with him and see him in his current place of ministry. I have always deeply appreciated the connectional nature of the Presbyterian Church.

This week in worship, we are reminded of the connectional nature of the whole Church, as congregations around the world celebrate World Communion Sunday. We come from different traditions and different locations, we speak different languages and say different prayers, but all of those differences are brought together at the Lord's Table, where we remember the same story and give thanks to the same Savior. Of course, at MAPC we celebrate communion every week, but this Sunday we will do so knowing all of our brothers and sisters of the faith are doing the same. In a time when it can be easier to remember what divides us, it is good to remember that the God who unites us is stronger than anything and everything else.

Peace,

*Jenny*



## Sunday Worship—World Communion Sunday October 7, 2018

### Worship Schedule

9 am & 11:15 am

Nursery—4th Fl. Phillips Building, 8:30 am—1:00 pm

This Sunday Rev. Jenny McDevitt will be preaching her sermon entitled ***Job: When the Worst Happens*** which will be based on the lectionary texts: Job 1:1, 2:1-10; Psalm 26; Hebrews 1:1-4, 2:5-12 and Mark 9:30-32. This being the first Sunday of the month, prayers for Healing and Wholeness will be offered during communion at both services. Preview the latest Sunday [bulletin](#), or [listen](#) to sermons and service highlights from previous Sundays on MAPC's website.

**Quartet Rehearsal, 8:40 am, Choir Room**

**Children's Worship, 9:15 am & 11:30 am, Phillips Lounge**

**Youth Worship, 9:15 am & 11:30 am, Dana Chapel**

**Fellowship Hour, 10 am & 12:30 pm, Church House Lobby**

**Church School, 10:10 am, 5th Floor**

**Adult Education, 10:10 am, Parish Hall (see details inside)**

**High School Fellowship, 10:10 am, 4th Floor Phillips Building**

**Youth Hour, 10:10 am, Youth Lounge**

**Ruth Weir Memorial Service & Inurnment, 12:45 pm, Dana Chapel & Columbarium**

**Church Choir Rehearsal, 10:20 am, Choir Room**

**Shelter Orientation, 1 pm, Shelter Space**

**ESL Classes, 1 pm, Fifth Floor**

**Senior Fellowship Lunch, 1:15 pm, Parish Hall**

**Overnight Shelter, 6:30 pm, Shelter Space**



**Madison  
Avenue  
Presbyterian  
Church**

**Issue #47**

**October 5, 2018**

### To Check out the Church's Calendar:

Go to the website at

[http://www.mapc.com/  
calendar/calendar/](http://www.mapc.com/calendar/calendar/)

**MAPC is on Facebook and  
Instagram!**

See you in church!  
The Pastoral Staff

### Inside this issue:

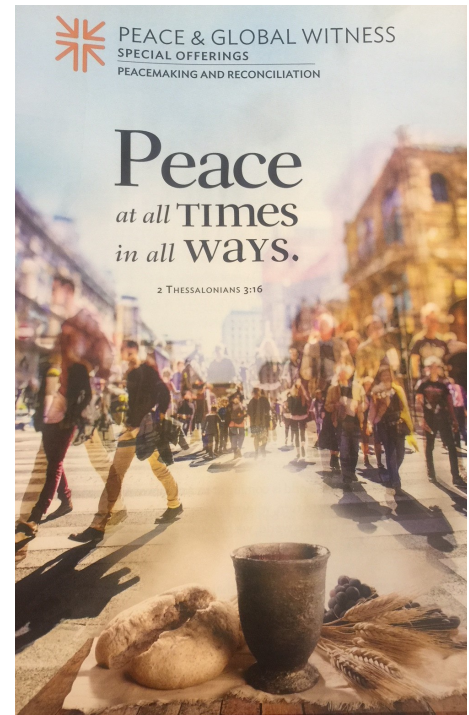
<i>A Note From Jenny</i>	<u>1</u>
<i>This Sunday</i>	<u>2</u>
	<u>3</u>
	<u>4</u>
<i>Other Events and Announcements</i>	<u>5</u> <u>6</u> <u>7</u>
<i>Fall Dates For Your Calendars</i>	<u>6</u>
<i>This Week at MAPC</i>	<u>7</u>
	<u>8</u>
<i>Christian Education at MAPC</i>	<u>9</u> <u>10</u> <u>11</u>
<i>Bible Study Groups</i>	<u>11</u>
<i>Hands-on Ministries</i>	<u>12</u>

# This Sunday

## The Peace and Global Witness Offering, October 7

“So he came and proclaimed peace to you who were far off and peace to those who were near” (Ephesians 2:14-17). The letter to the Ephesians tells us that Jesus came to proclaim a peace that is universal. While the earthly ministry of Jesus was in a specific age and place, the peace he shared is limited by neither time nor geography. As followers of Christ, our work for peace begins in our own neighborhoods and extends to the ends of the earth. The Peace and Global Witness Offering exists to support the holistic and wide-ranging witness of the whole church. This special offering allows the congregation to give twenty-five percent of the money received to a local organization. The remaining donation will be given to the Presbyterian Mission Agency and our mid council.

**This year, Madison Avenue Presbyterian Church has chosen to give our 25 percent to New Life of New York City ([newlifeofnyc.org](http://newlifeofnyc.org)), which is a local organization that seeks to engage at-risk and vulnerable youth to resist unhealthy environments in order to encourage them to make good decisions while living in the city.** MAPC has been a longtime supporter of New Life of NYC’s work and would like to continue supporting an organization that helps children find peace in their daily challenges. We hope we have piqued your interest in supporting this special offering on **October 7th** during worship, in order to put an end to hostilities and seek peace for those not only in NYC, but throughout the world.



## Adult Education: *Faces of Our Faith*, 10:10 am, Parish Hall



This Sunday, all youth and adults are invited to come learn about Job! Christina Cosby will lead our time together, which will focus on interacting with the story through a variety of mediums. Job has always been a favorite biblical book of Christina’s, and this week you may happen to enjoy it in a way that is surprising.

Come learn and explore this *Face of Our Faith* together! We will be in the Parish Hall.

## Senior Fellowship Lunch, October 7, 1:15 pm in the Parish Hall

MAPC Seniors and friends, please come down to the Parish Hall at 1:15 to enjoy a light lunch and conversation together. We invite you all to join in the memorial service for Ruth Weir following the 11:15 worship service in the Dana Chapel before going down to lunch. The suggested donation for lunch is \$10.



## Learn More About MAPC's Shelter, October 7



According to the Coalition for the Homeless census, nearly 64,000 men, women, and children slept in a NYC shelter each night by the end of 2017. No doubt, an overwhelming number that tears at our hearts. Thankfully, MAPC is highly aware and active in providing a shelter for about 12 men caught in the brutal system of poverty. Therefore, all of you are invited to learn more about MAPC's nightly shelter at the Outreach Committee's Shelter Open House on **Sunday, October 7th at 1 pm**. Come and educate yourself on the ins and outs of the shelter and homelessness. Your attendance will not automatically volunteer you, but it will give you an opportunity to know more about the city we live in and the people we share it with. Please send any and all questions to Rebecca Heilman at [rmh@mapc.com](mailto:rmh@mapc.com). Come learn with us!

## Other Events & Announcements

### Fall Fellowship Gatherings—Sow Bountifully!



The following information is to assist people in planning to attend one of our MAPC Fall Fellowship Gatherings. To make a reservation and for exact location details, please call the church at 212-288-8920, extension 8485.

#### Date and Time

Tuesday, October 16 @ 6:00-8:00 pm

Sunday, October 21 @ 4:00-6:00 pm

Friday, November 2 @ 6:00-9:00 pm

Monday, November 5 @ 6:00-8:00 pm

Monday, November 12 @ 6:00-8:00 pm

#### Approximate Location

Park Avenue about East 58th Street  
The home is wheelchair accessible.

West 92nd Street  
The home is wheelchair accessible.

West 91st Street  
The home has stairs.

Park Avenue about East 89th Street  
This home is wheelchair accessible.

East 67th Street  
The home is wheelchair accessible.

## Dinner with Mayada, Monday Evening, October 15 at 6 pm



It's time to sign up now for the third annual Dinner with Mayada! We need to know how many tables to set, how many cookbooks to order, and most importantly, Mayada needs to know how many people she is cooking for!

You can reserve your spot at the table by:

1. Singing up and paying for the dinner and any cookbooks you would like here: <https://www.brownpapertickets.com/event/3631389>
2. Email Lissette Perez-Erazo in the church office: [lgp@mapc.com](mailto:lgp@mapc.com)
3. Sign up during fellowship hour this Sunday at church.

Please don't wait! There are people from other churches and friends of MAPC members who are interested in this event, and you don't want to miss out.

### Further Details:

Mayada Anjari is a refugee from Syria, who, along with her family, has resettled in Jersey City with the help of Rutgers Presbyterian Church and Church World Service. Mayada is a wonderful cook, and Dinners with Mayada are one way she helps support her family as they establish their lives in the United States.

*Food and Wine* lists Mayada's cookbook as one of the best cookbooks coming out this fall: <https://www.foodandwine.com/news/fall-cookbooks>. The book is \$24.95. You can preview it here: <https://www.breadandsaltbetweenus.org/>

The cost of dinner is \$40 for adults, and \$20 for children under 12. Since this is a benefit dinner, please pay the full price, if possible. If the full \$40 is not possible for you, please pay what you can, and the Congregational Nurture Committee will subsidize the rest. This event is BYOB, and we invite you to bring a bottle of wine to share—we also encourage you to invite friends!

## CROP Hunger Walk, Sunday, October 21, 1 pm, Church House



You're invited to help end hunger in any way you feel you can give!

For the past several years, Madison Avenue Presbyterian Church Christian Education Committee has helped organize the CROP Hunger Walk, which is run by local congregations or groups to help raise funds to end hunger around the world, one step at a time. Please join our team as we make our way down the streets of NYC, or to donate funds for the event in order to provide food and water, as well as resources that empower people to meet their own needs.

MAPC receives several grants through our participation. By donating or taking part in the Walk, you also lend a helping hand to our own Thursday Night Open Table, which feeds about a hundred people experiencing homelessness each week.

We hope to give you more information in the coming weeks about the Walk! Until then, please visit <https://www.crophungerwalk.org/newyorkny/MAPC> to sign up or donate to CROP Hunger Walk.

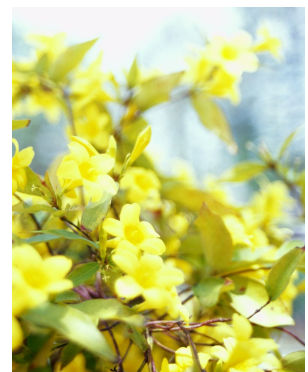
## Do You Have a Student Away at School?



If you have a student away at boarding school or college we want to know about it! A church community is often a second family to children as they grow into young adults and we want to continue to let your student know that they are important to our community. If your student is no longer at home, please share their address with Christina Cosby by email at [cac@mapc.com](mailto:cac@mapc.com), so that their church family can send words of encouragement and care packages as they continue

## Annual Women's Brunch, Saturday, October 20, 10 am to Noon

Our annual women's brunch is coming right up! Once again, we look forward to hearing from MAPC women about their stories—what helped shaped their lives and led them to this point—and sharing our own stories around the table. This is a wonderful time of fellowship, and we encourage the women of the congregation to be there—and invite a friend! We will open the Roof Garden for spouses or caregivers and children to go play while mothers enjoy the brunch. The suggested donation for this event is \$20 (there will be mimosas). RSVP to Lissette Perez-Eraza in the church offices, [lgp@mapc.com](mailto:lgp@mapc.com), or sign up during fellowship hour after worship.



## Fall Dates for Your Calendars

Sunday, October 7 (1 pm)—Senior Fellowship Lunch, Parish Hall

**Wednesday, October 10—Blessing of the Animals, meet at the church at 5:30 pm with pets!**

Monday, October 15 (6 pm)—Dinner with Mayada

Saturday, October 20 (10 am)—Annual Women's Brunch

Friday, October 26 (6 pm)—Annual Church Family Night Halloween Bash!

Monday, October 29 (7 pm)—Faith & Fermentation

Sunday, November 4 (1 pm)—Senior Fellowship Lunch, Parish Hall

Sunday, November 11—Hood Library Fellowship Annual Book Sale

Sunday, November 18—Stewardship Dedication Sunday (with brunches following the services)

Sunday, November 30 (6 pm)—Church Family Night, Parish Hall

Saturday, December 1 (9 am to 3 pm)—Advent Retreat/Quiet Day

Sunday, December 9 (1 pm)—Senior Fellowship Lunch, Parish Hall

Sunday, December 16 (4 pm)—14th Annual Carol Sing, Sanctuary

**Please feel welcome to join us for our events!**

**It's a busy and exciting Fall season here at MAPC!**

## Look What's Happening at MAPC This Week!

### Monday, October 8

All Day	Columbus Day—Church House Closed	
6:30 pm	Overnight Shelter	Shelter Space

### Tuesday, October 9

8:00 am	Long Term Planning Committee	Room 608
6:30 pm	Overnight Shelter	Shelter Space
6:30 pm	Personnel Committee	Pastor's Study
7:00 pm	Outreach Committee	Library

### Wednesday, October 10

12:30 pm	Reading Through the Bible	Phillips Lounge
3:45 pm	Kids Club	PH, PL, Gym, 5th Floor
3:45 pm	Wee Kids	4th Floor
4:00 pm	Children's Choir Rehearsal	Choir Room
5:00 pm	T(w)een Club	Youth Lounge
5:30 pm	Service of the Animals	Church Steps
6:00 pm	Cocaine Anonymous	5th Floor
6:30 pm	Overnight Shelter	Shelter Space
7:00 pm	Worship & Music Committee	Pastor's Study

### Thursday, October 11

6:00 pm	20s/30s Bible Study	Apt 10C
6:30 pm	Thursday Open Table	Parish Hall
6:30 pm	Recovery Group	Library
6:30 pm	Overnight Shelter	Shelter Space
7:00 pm	Saint Andrew Chorale Rehearsal	5th Floor
8:30 pm	Church Choir Rehearsal	Choir Room

### Friday, October 12

6:30 pm	Overnight Shelter	Shelter Space
---------	-------------------	---------------

### Saturday, October 13

10:00 am	Quartet Rehearsal	Choir Room
11:00 am	Vera Gordon Memorial Service	Sanctuary
12:00 pm	Vera Gordon Reception	Parish Hall

# Christian Education at MAPC

## Volunteer this Fall with Children's Worship & Youth Worship



Are you passionate about worship at MAPC? Worship is a time that we share a set liturgy as a way to reconnect with God and one another. Moreover, worship teaches us valuable patterns that we use across many areas in our lives. Each Sunday, we share the importance of this liturgy and pattern of life with our younger generation as we worship in an interactive way. This valuable time for our families is made possible by your help! Sign-up and come experience worship in a new way!

If you have further questions or want to learn more, please feel free to reach out to Christina Cosby at [cac@mapc.com](mailto:cac@mapc.com) or by calling 212-288-8920.

## Children and Family Ministries

### Children's Worship

Children's Worship takes place during both worship services at 9 am and 11:15 am. This is an interactive worship service designed specifically for children 3rd grade and under.



### Church School Sunday Mornings at 10:10 am, 5th Floor

Our Church School teachers have planned an exciting Fall. Join us as we share in a joint opening time and engage the Bible in our peer groups. We look forward to learning and exploring God's creation and our role in taking care of it together this year! To sign up or get more information, please out to Christina Cosby at [cac@mapc.com](mailto:cac@mapc.com).

### Kids Club and Wee Kids, Wednesdays, 4-6 pm, Church House

Kids and families, join us on Wednesday afternoons from 4 to 6 pm for Kids Club! Join us for Bible Study, Choir, Recreation and Dinner. To register, visit our [website](http://www.mapc.com) or contact Christina Cosby at [cac@mapc.com](mailto:cac@mapc.com).



## Middle and High School Ministries

### Youth Worship September-May, from 9 am to 11:15 am!

Worship with your peers and friends in an interactive way in the Dana Chapel during both worship services every Sunday morning. Youth grades 4-7 are invited to join Christina Cosby for a time of worship as they learn about our worship practices at MAPC and lead their worship experience!

### Sunday Youth Hour, Sunday Mornings at 10:10 am, Youth Lounge

What characters inspire you in movies, books, and music? How do they show love toward God and others in an inspirational way? Join us on Sunday Mornings as we discover *Faces of Our Faith* as they appear in popular culture! We will use popular movie clips, characters from books, and people we personally know to explore how they live into their faith and how God calls us to do the same! Middle and High Schoolers are invited to join Christina on Sunday mornings at 10:10 am. Hope to see you on Sunday.



### T(w)een Club: Middle School Mid-Week Youth Group, Wednesday Afternoons, 5-7 pm, Church House

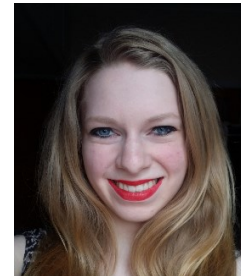
Middle Schoolers, we're trying something new just for you! Join us for T(w)een Club Wednesday evenings from 5-7 pm. We'll share dinner and study the Bible with Rev. Jenny McDevitt (bring all your tough questions—she's ready for you!) Haven't joined us on Wednesday nights before? This is the perfect chance to change that, and it's never too late to sign up! For more information, contact Christina Cosby at [cac@mapc.com](mailto:cac@mapc.com) or visit our [website](http://www.mapc.com) to find the registration form.



## High School Fellowship, Sunday Mornings, 10:10 am 4th Floor Phillips Building

Have you been looking for a space to call your own and re-connect with your church friends after a summer away or at camp? MAPC is excited to premiere our brand-new High School Fellowship this coming Sunday. This will be a time that you help design.

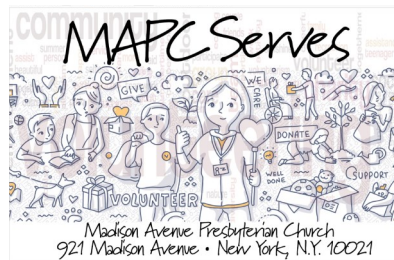
This Sunday, seminary interns, will lead us as we explore Luke in conversation and through art.



## MAPC SERVES

### New Youth Service Group for High School Students—MAPC SERVES

Join us as we embark on a new program tailored to serving the vulnerable across our City with high school students in mind. This year, we will share in service and fellowship as we meet the needs of three communities: the elderly, the homeless, and children. Each month, we will offer three service opportunities that reach these three populations. We look forward to having you join us in service this fall.



Save the Dates:

**October 21st at 1 pm**, CROP Hunger Walk: a walk to raise awareness about hunger needs across our City and around the world. (See page 6 for more information)



**November 1st at 6 pm**, Thursday Open Table: serving a meal to our neighbors in need.



**November 5th at 4 pm**, James Lenox House: helping residents better learn to understand and use personal electronic devices (computer, cell phone, iPad, Kindle...)



## Bible Studies at MAPC

Looking for a place to read Scripture together and get to know people at MAPC? Come to one of our Bible Studies; newcomers are always welcome! For more information, go to <http://www.mapc.com/christian-ed/adultclasses/>.

### Reading Through the Bible:

*Wednesdays, 12:30 pm-1:30 pm, Phillips Lounge*

Reading Through the Bible picks up with Proverbs 22 on Wednesday, October 10.

### 20s/30s Bible Study: (Next Meeting is Thursday, October 25)

*2nd and 4th Thursdays, 6:00-8:00 pm, Apt. 10C*

Across culture and time, food and wine have been enjoyed by many. This is no different throughout Scripture. This fall we are going to look at the importance of table fellowship and the production of wine in scripture as we begin a new year. Come, as we sample food, wine, and non-alcoholic beverages from different regions around the world and discover their Biblical roots.

### Women's Bible Study: (Next Meeting is Monday, October 22)

*2nd and 4th Mondays, 6:30 pm, Phillips Lounge*

The minor prophets, who are they? What do they have to say to us today? These are the same questions we asked as we wondered what to study next. Come learn with us as we begin this new study! Joel has already surprised us as he values the rituals of worship.

Join us at 6:30 pm every other Monday or come early with a bit to eat as we enjoy fellowship with one another. We cannot wait to see you there!

## Stay Connected to Worship at MAPC

*Did you know* that even if you're away or unable to make it to church that you can listen to Sunday worship services at MAPC? Sermons and service highlights (including scripture

lessons, hymns and anthems) are uploaded afterwards, and are permanently accessible. They can be downloaded to your electronic device or listened to directly on MAPC's website: [peruse](#) this val-

uable online resource today! Once ready for print, our Sunday bulletins are also uploaded to our website on Thursday afternoons and are made permanently available for download.

## Clothing Donations Needed for Women and Men

The Homeless Outreach Program at Jan Hus Presbyterian Church, one of MAPC's long-term outreach partners, continues to see a dramatic increase of homeless persons seeking assistance. Both casual and business clothing for men and women, as well as new undergarments, are among their most urgent needs. If you have clothing items in clean and neat condition, we encourage you to take them to the Jan Hus Clothes Pantry at 351 East 74th Street at 1st Avenue. The clothes pantry is available to take donations Monday through Saturday from 8 am-8pm and on Sunday from 9 am-3:30 pm. NOTE: Please bring all clothing to Jan Hus **directly**—clothing may no longer be left in the coatroom off of the MAPC Church House Lobby.

## Madison Avenue Presbyterian Church

921 Madison Avenue  
New York, NY 10021  
Phone: 212-288-8920  
Fax: 212-249-1466

**We're on the  
web  
[www.mapc.com](http://www.mapc.com)**

## Flowers for the Sanctuary

Is there someone you would like to honor or remember through a gift of flowers for Sunday worship? If so, please contact Lissette Perez-Erazo at [lgp@mapc.com](mailto:lgp@mapc.com) or 212-288-8920. The cost for Sunday flowers is \$110.

## Give Some Love to the New York Common Pantry Grocery Carts

Far too often, a basic human necessity like food is expensive and scarce, especially in New York City. The New York Common Pantry works each year to reduce stress in people's lives by providing a pantry to those in need. The pantry continues to ask for your help! **They need canned or dried beans, canned chicken/salmon/tuna, rice, dried pasta, fresh or canned vegetables, and peanut butter.** We simply ask for no glass containers! You may drop your items off in the provided grocery carts found in the Church House Lobby or the Sanctuary Narthex. Or, since we are busy people in a busy city, you may also order groceries to be delivered to the New York Common Pantry (8 East 109th Street, New York, NY, 10029, Phone: 917-720-9700) by one of your grocers. Know that any items you give will not only impact a family, but also a child's life. And we are most thankful for that!

## Hands-on Ministries

### Ways to get involved at MAPC with hands and hearts!

*"Faith by itself, if it has no works, is dead." The following opportunities to participate in hands-on ministries are provided by the Outreach Committee. If you are interested in exploring any of these opportunities, e-mail Christina Cosby at [cac@mapc.com](mailto:cac@mapc.com). Let's put our faith into action!*

### The Thursday Open Table Needs YOU!

Can you spare 2 hours on a Thursday evening from 6-8 pm? If so, then you can help feed 120 hungry neighbors a hot meal, offering them Christian hospitality. Please contact Kathy Hoffman at

[kfhoffman@earthlink.net](mailto:kfhoffman@earthlink.net) to volunteer for this opportunity (formerly known as Shelter Dinner)

### Host at the Shelter

Hosts are needed for the Shelter! The Shelter is comfortable and the experience of helping these men get their lives back on track is one that will change your heart. Two shifts are offered each evening. Early evening hosts volunteer from 6:30 pm to 8:30 pm; overnight hosts volunteer from 8:30 pm to 7 am. Contact Christina Cosby at [cac@mapc.com](mailto:cac@mapc.com) for more information.

### Search and Care

Can you spend an afternoon with

an elderly person on the Upper Eastside to walk their pet, go with them to a doctor's appointment, help them shop, balance their checkbook or even just offer them the gift of companionship? If so, contact Robin Strashun at [SandC@searchandcare.org](mailto:SandC@searchandcare.org).

### New York Common Pantry

The New York Common Pantry offers opportunities for volunteers to help pack and distribute food to the working poor on Saturday mornings and other times each week. MAPC has supported this very well-organized and effective organization since its inception 30 years ago. This is a wonderful way to follow Christ's command to "feed my sheep!"